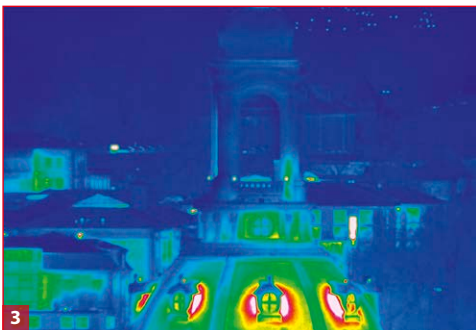
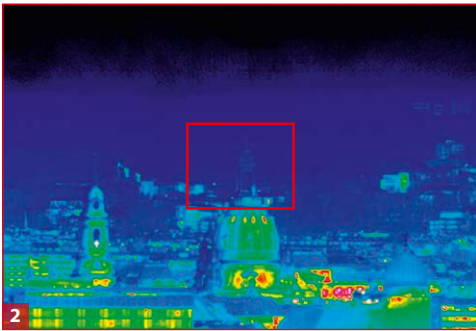
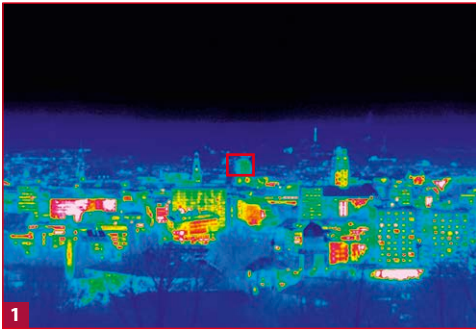


# ImageIR® 8300 / 9300 Z

Thermal Imaging Systems

## INFRA<sup>TEC</sup>.

Europe's leading specialist for infrared sensors and measurement technology



Church of Our Lady in Dresden, lens focal length (28 ... 850) mm

Cooled detectors with up to (1,280 × 1,024) IR pixels

Spectral range (3.6 ... 4.9)  $\mu\text{m}$

30× infrared zoom lens

Detection range of 15 km for persons

Detection range of 18 km for vehicles



[www.InfraTec.eu](http://www.InfraTec.eu)

[www.InfraTec-infrared.com](http://www.InfraTec-infrared.com)

Made in Germany



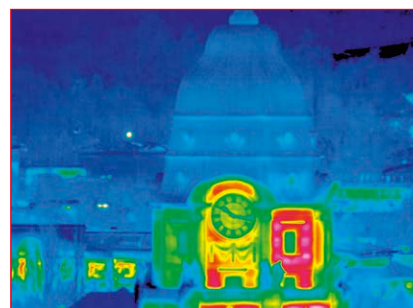
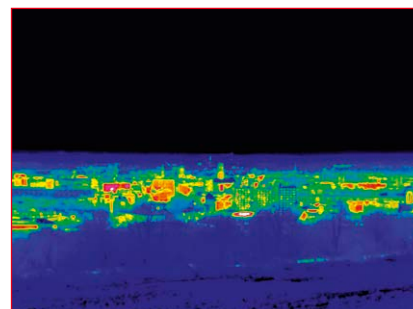
Latest information on the internet.

Spectral range	(3.6 ... 4.9) $\mu\text{m}$
Pitch	15 $\mu\text{m}$
Detector	InSb
Detector format (IR pixels)	ImagelR® 8300 Z: (640 × 512) ImagelR® 9300 Z: (1,280 × 1,024)
Image acquisition	Snapshot
Readout mode	ITR / IWR
Aperture ratio	f/5.5
Detector cooling	Stirling cooler
Temperature measuring range	(-10 ... 200) °C, up to 500 °C*
Temperature resolution @ 30 °C	0.02 K
Frame rate (full / half / quarter / sub frame)*	ImagelR® 8300 Z: 200 / 570 / 1,000 / 4,700 Hz (14 bit), 200 / 670 / 1,200 / 5,000 Hz (13 bit) ImagelR® 9300 Z: 50 / 200 / 390 / 3,400 Hz
Window mode	Yes
Focus	Motor focus with absolut focussing
Focusing time	300 m up to $\infty$ : $\leq 0.5$ s
Lens focal length	(28 ... 850) mm or (50 ... 1,350) mm (30× optical zoom)
Zoom setting time	(100 ... 850) mm: $\leq 2$ s
Field of view	ImagelR® 8300 Z: (19.8 × 15.9)° ... (0.6 × 0.5)° ImagelR® 9300 Z: (39.8 × 32.3)° ... (1.3 × 1.0)°
Minimum object distance	(3 ... 50) m
Max. detection range (vehicle / person)	18 / 15 km
Max. identification range (vehicle / person)	12 / 9.5 km
Dynamic range*	ImagelR® 8300 Z: 13 / 14 bit ImagelR® 9300 Z: 14 bit
Integration time	ImagelR® 8300 Z: (0.6 ... 20,000) $\mu\text{s}$ ImagelR® 9300 Z: (0.5 ... 18,000) $\mu\text{s}$
Image synchronisation	Internal, IRIG-B, external
Interfaces	GigE-Vision compatible, RS232, HDMI*
Trigger	SyncIN, 2 IN* / 2 OUT*, IRIG*
Tripod adapter	8 × M6
Power supply	24 V DC, wide-range power supply (100 ... 240) V AC
Storage and operation temperature	(-40 ... 70) °C, (-20 ... 50) °C
Protection degree	IP54, IP65*
Dimensions, weight	(360 × 240 × 270) mm, 17.5 kg
Further functions	Multi Integration Time*

\* Depending on model

The **ImagelR® camera series** is a high-precision measurement solution that has been an indispensable tool in **high-quality research, development and automation solutions** for many years. There is more beyond high-end infrared camera series ImagelR®: The combination of this thermal imaging system with a premium **30× zoom lens facilitates complex observation and investigation**, such as border control, vehicle observation and monitoring of the environment or animals. The detection range is outstanding: vehicles can be detected up to 18 km and persons up to 15 km.

The rugged and exact **power zoom** together with the high-performance 30× zoom lens achieves a **continuously adjustable field of view** from (39.8 × 32.3)° down to (1.3 × 1.0)° with a detector format of (1,280 × 1,024) IR pixels. Therefore, also objects being far away can be displayed with a high-resolution infrared image. The camera versions ImagelR® 8300 Z and ImagelR® 9300 Z with detector formats of **(640 × 512) and (1,280 × 1,024) IR pixels** are available. The customisable software interface offers **time coded real-time playback**.



Dresden town hall, lens focal length (28 ... 850) mm

Headquarters

**InfraTec GmbH**  
**Infrarotsensorik und Messtechnik**  
 Gostritzer Str. 61 – 63  
 01217 Dresden / GERMANY  
 Phone +49 351 82876-610  
 Fax +49 351 82876-543  
 E-mail thermo@InfraTec.de

USA office

**InfraTec infrared LLC**  
 5048 Tennyson Pkwy.  
 Plano TX 75024 / USA  
 Phone +1 844-226-3722 (toll free)  
 E-mail thermo@InfraTec-infrared.com

© InfraTec 04/2018 (All stated product names and trademarks remain in property of their respective owners).  
 Design, specification and technical progress subject to change without prior notice.